

Sink Circolari Gun Metal

Kitchen Sinks

Code: 1130 066



DETAILS

Edge/Installation Type	Flush-mount Top-mount
Material	AISI 304 stainless steel
Texture	Foster brushed
Finish	PVD
Coloring	Gun Metal
Base	45 cm
Dimensions	ø 425
Bowl dimension	Ø 380mm
Number of bowls	1 bowl

Built-in hole

[View technical data sheet](#)

Standard fittings

Fixing hooks, gasket, drain, overflow and siphon, boxed packing

Mixer holes

No standard holes

Drainer

No

Notes:

Foster brushed sink with highly effective concentric polishing

FEATURES

Added value

Foster uses steel thicknesses higher than those used on average by other manufacturers. This is how, thanks to our long experience, we know how to make sinks of superior quality and with a better resistance to aging.

Basket 3,5" waste fitting

The drain is equipped with a large 3.5" drain, with the practical basket cap that prevents the discharge of solid parts.

Gun Metal

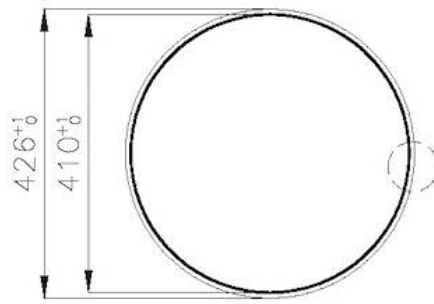
The Gun Metal finish is obtained by treating steel with a physical process called PVD (Physical Vacuum Deposition) which deposits particles of noble metals on the surface. The result is a unique and refined aesthetic effect, and an improvement of the mechanical properties of the steel which is more resistant to impact and scratches.

High thickness

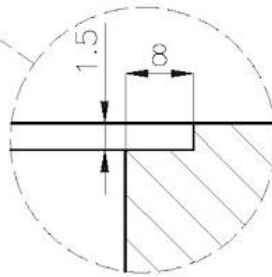
1mm thick steel. A significant thickness, which guarantees the maximum sturdiness and durability.

TECHNICAL DATA

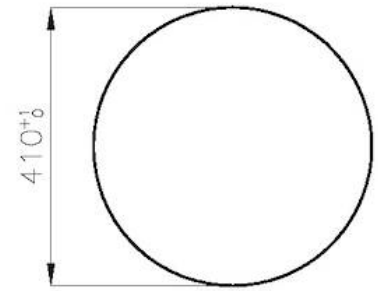
FT



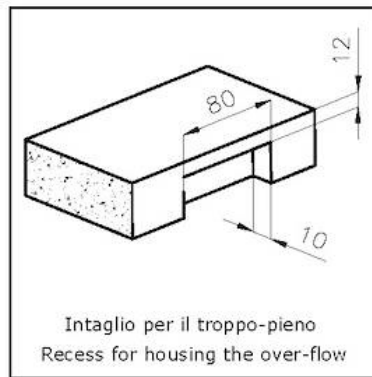
Cut out size
Dimensioni per foratura top



FTS



Cut out size
Dimensioni per foratura top



Intaglio per il troppo-pieno
Recess for housing the over-flow

GALLERY



OPTIONAL ACCESSORIES



Iroko-wood chopping board
8648 002

RECOMMENDED PAIRINGS



Mixer Tap Omega Plus Gun Metal
8498 856

OPTIONAL AUTOMATIC WASTE FITTINGS



**Space Push Gun Metal automatic
waste fitting - PO**

8407 120